



SPRAY CHARACTERISTICS

- Uniform distribution of spray droplets in a solid cone pattern.
- Droplet size is larger than in hollow cone nozzles of equal capacity.
- Purpose designed for continuous casting applications.
- Available spray angles of 50°, 65°, 80°, 90° and 120°.

CONSTRUCTION AND MATERIALS

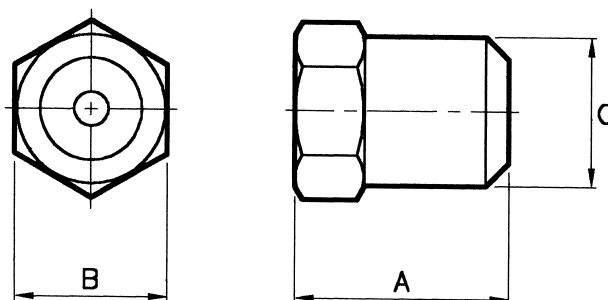
- The nozzle uses a standard cross-milled core design.
- The cross-milled core is pressed into place and is removable.
- Inlet thread is 3/8" BSPP Female.
- Brass and Stainless Steel are standard.
- Other materials are available on a special order.

ORDER EXAMPLE

3/8" BX 40-80°, Stainless Steel.

DIMENSIONS AND WEIGHTS

Nozzle Number	Dimensions (mm)			Weight (g)
	A	B Hex	C	
BX40 - BX90	24,0	20,8	20,2	40
BX100 - BX160	35,0	20,8	20,2	55



Maximum Recommended
Pressure: 35 Bar.G.

CAPACITY CHART

NOZZLE NUMBER	FLOW RATE IN LITRES/MIN AT Bar.G.								
	1,0	1,5	2,0	2,5	3,0	4,0	5,0	6,0	7,0
BX 40	2,31	2,38	3,27	3,65	4,0	4,62	5,10	5,62	6,11
BX 45	2,60	3,18	3,67	4,11	4,5	5,20	5,74	6,31	6,86
BX 50	2,89	3,54	4,08	4,56	5,0	5,77	6,37	7,05	7,61
BX 55	3,18	3,89	4,49	5,02	5,5	6,35	7,01	7,75	8,38
BX 60	3,46	4,24	4,90	5,48	6,0	6,93	7,65	8,46	9,15
BX 65	3,75	4,670	5,31	5,93	6,5	7,51	8,29	9,16	9,91
BX 70	4,04	4,95	5,71	6,93	7,0	8,08	8,92	9,87	10,66
BX 80	4,62	5,66	6,53	7,30	8,0	9,24	10,20	11,28	12,19
BX 90	5,20	6,36	7,35	8,22	9,0	10,39	11,47	12,69	13,71
BX 100	5,77	7,07	8,16	9,13	10,0	11,55	12,75	14,10	15,25
BX 110	6,35	7,80	8,98	10,04	11,0	12,70	14,02	15,51	16,78
BX 120	6,93	8,49	9,80	10,95	12,0	13,86	15,30	16,92	18,31
BX 140	8,08	9,90	11,42	12,78	14,0	16,16	17,84	19,74	21,32
BX 160	9,24	11,32	13,06	14,60	16,0	18,48	20,40	22,56	24,38

Contact our Helpline for
any special requirements:
Tel: +44 (0) 151 424 6821
Fax: +44 (0) 151 495 1043
e-mail: sales@delavan.co.uk
Web: www.delavan.co.uk

