



## SPRAY CHARACTERISTICS

- Uniform distribution of spray droplets in a solid cone spray pattern.
- 30° is the standard spray angle.
- Relatively coarse spray droplets with velocity and unit impact higher than standard solid cone sprays, which have wider spray angles at the same flow and pressure.

## CONSTRUCTION AND MATERIALS

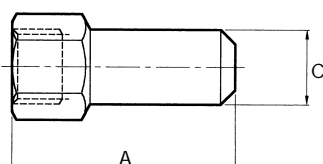
- One piece body with cross-milled or vane type core pressed into place which is removable.
- Core imparts the necessary swirl to produce a solid cone spray pattern.
- Hexagon body for easy installation eliminates distortion of orifice during installation.
- Threads up to 1" are BSPP and above are BSPT.
- 1 1/4" and larger are generally cast and are available in Gunmetal, Stainless Steel and Cast Iron.
- Brass and Stainless Steel are standard for hexagon barstock sizes.
- Other materials to special order.

## ORDER EXAMPLE

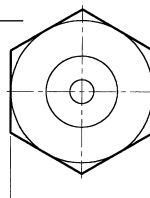
1 1/4" C.J.F. 150 Gunmetal.

## DIMENSIONS AND WEIGHTS

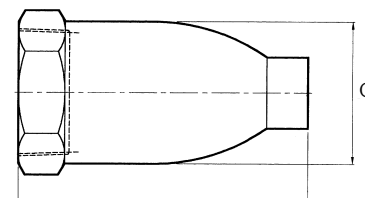
Thread Size	Dimensions (mm)			Weight (g)	Thread Size	Dimensions (mm)			Weight (kg)
	A	B Hex	C			A	B Hex	C	
1/8"	33.3	15.3	10.7	20	1 1/4"	95	48	48	0,6
1/4"	42.8	18.0	13.8	31	1 1/2"	108	56	54	0,7
3/8"	50.8	20.8	17.0	72	2"	136	73	67	1,6
1/2"	63.5	25.7	21.0	140	3"	200	98	98	5,9
3/4"	82.6	31.8	26.5	260	4"	250	127	121	7,5
1"	101.6	38.0	36.5	395					



1/8" - 1" C.J.F.



1 1/4" - 4" C.J.F.



## CAPACITY CHART

Maximum Recommended Pressure:  
35 Bar.G. (Metal) 7 Bar.G. (Plastic).

NOZZLE NUMBER	BSPT THREAD SIZE											FLOW RATE IN LITRES/MIN AT Bar.G.							SPRAY ANGLES (°) AT Bar.G.		
	1/8	1/4	3/8	1/2	3/4	1	1 1/4	1 1/2	2	3	4	1	2	3	5	7	10	15	1	3	7
C.J.F. 3												0,67	0,97	1,18	1,5	1,8	2,2	2,6	17	30	32
C.J.F. 7,5												1,71	2,42	2,96	3,8	4,5	5,4	6,6	23	30	30
C.J.F. 15												3,42	4,84	5,92	7,6	9,0	11	13	25	30	30
C.J.F. 30												6,9	9,7	11,8	15	18	22	27	26	30	31
C.J.F. 50												11,4	16,1	19,7	25	30	36	44	26	30	31
C.J.F. 70												16,0	22,6	27,6	36	42	50	62	27	30	30
C.J.F. 100												23	32	39	51	60	72	88	27	30	30
C.J.F. 150												34	48	59	76	90	108	132	27	30	30
C.J.F. 200												45	64	79	102	121	144	177	27	30	30
C.J.F. 250												57	81	99	127	151	180	221	27	30	30
C.J.F. 300												69	97	118	153	181	216	265	27	30	30
C.J.F. 350												80	113	138	178	211	252	309	28	30	30
C.J.F. 400												91	129	158	204	241	288	353	28	30	30
C.J.F. 500												114	161	197	255	302	360	442	28	30	30
C.J.F. 750												171	242	296	382	452	541	662	28	30	30
C.J.F. 1000												228	322	395	510	603	721	883	28	30	30
C.J.F. 1500												342	484	592	765	905	1082	1325	28	30	30
C.J.F. 2000												456	645	790	1020	1206	1442	1766	28	30	30
C.J.F. 2500												570	806	987	1275	1508	1803	2208	28	30	30

Contact our Helpline for any special requirements:  
Tel: +44 (0) 151 424 6821  
Fax: +44 (0) 151 495 1043  
e-mail: sales@delavan.co.uk  
Web: www.delavan.co.uk

