



SPRAY CHARACTERISTICS

- Uniform wide angle hollow cone spray pattern.
- Atomisation becomes finer at higher pressures.
- Spray angle is 110°.

CONSTRUCTION AND MATERIALS

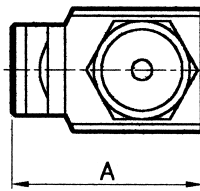
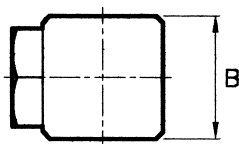
- Right angle configuration, quick attach body with no internal vanes.
- Unique swirl chamber with single inlet and large passageways to provide a more uniform spray and to reduce chances of clogging.
- Available in Brass and 316 Stainless Steel.

ORDER EXAMPLE

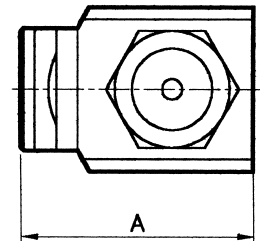
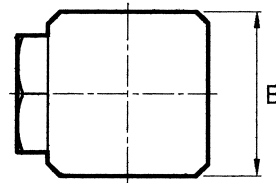
DFAF 50 Stainless Steel.

DIMENSIONS (mm)

Nozzle Size	A	B Sq
DFAF STANDARD	30,0	19,0
DFAF LARGE	36,5	25,4



DFAF STANDARD



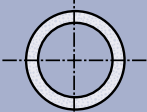
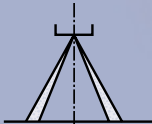
DFAF LARGE

CAPACITY CHART

NOZZLE NUMBER	BODY SIZE*		FLOW RATE IN LITRES/MIN AT Bar.G.							
	S	L	0,7	1,0	2,0	3,0	4,0	5,0	6,0	7,0
DFAF 6			1,14	1,3	1,9	2,4	2,7	3,1	3,4	3,6
DFAF 10			1,92	2,3	3,2	3,9	4,6	5,1	5,6	6,0
DFAF 15			2,84	3,4	4,8	5,9	6,8	7,6	8,4	9,0
DFAF 20			3,80	4,5	6,4	7,9	9,1	10,2	11,2	12,1
DFAF 25			4,76	5,7	8,1	9,9	11,4	12,7	14,0	15,1
DFAF 30			5,72	6,9	9,7	11,8	13,7	15,3	16,8	18,1
DFAF 40			7,60	9,1	12,9	15,8	18,2	20,4	22,3	24,1
DFAF 50			9,51	11,4	16,1	19,7	22,8	25,5	27,9	30,2
DFAF 60			11,44	13,6	19,3	23,7	27,3	30,6	33,5	36,2
DFAF 80			15,23	18,2	25,8	31,6	36,5	40,8	44,7	48,2
DFAF 100			19,08	22,8	32,2	39,5	45,6	41,0	55,8	60,3
DFAF 125			23,84	28,5	40,3	49,4	57,0	63,7	69,8	75,4
DFAF 150			28,59	34,2	48,3	59,2	68,4	76,4	83,7	90,5
DFAF 200			38,16	45,6	64,5	79,0	91,2	102	112	122

*S = for use with 1/4" or 3/8" Dela-Fit Bodies. L = for use with 1/2" Dela-Fit Bodies.

Contact our Helpline for any special requirements:
Tel: +44 (0) 151 424 6821
Fax: +44 (0) 151 495 1043
e-mail: sales@delavan.co.uk
Web: www.delavan.co.uk



DFAF