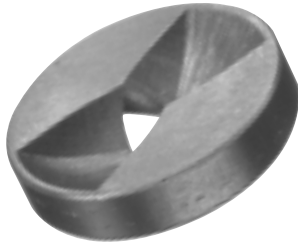
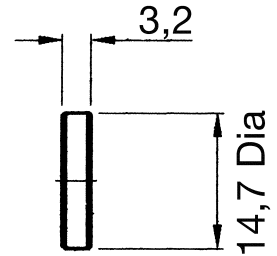
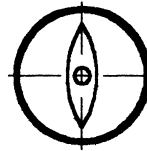




FRONT VIEW



REAR VIEW



Maximum Recommended Pressure: 35 Bar.G.

SPRAY CHARACTERISTICS

- Self cleaning action assures constant spray force to kill foam in headbox and moulds, to clean wires, cylinder moulds, rotary screens and to wash felts, clean grinding stones, etc.
- Produces a uniform flat, fan shaped pattern with tapering edges.
- Requires overlapping for even distribution.

CONSTRUCTION AND MATERIALS

- Inner surface of nozzle is grooved to give concentrated, fan shaped spray.
- These sprays should overlap sufficiently to cover the entire sprayed surface, but without reducing each other's impact.
- Spray nozzle patterns should be offset by 15° to allow overlap without impingement.
- Stainless Steel and Brass.
- Standard spray angles are 45°, 60° and 90° @ 2.8 Bar.G.
- Other materials available to special order.
- Nozzle will fit into standard nozzle bodies and cap.
- Thread sizes are Male BSPT and Female BSPT.

ORDER EXAMPLE

EF 4-60° Stainless Steel.

CAPACITY CHART

NOZZLE NUMBER	Approx. Orifice Dia. (mm)	FLOW RATE IN LITRES/MIN AT Bar.G						
		0,7	1,5	2	3	4	5	7
EF 1	1,2	0,44	0,73	0,96	1,2	1,4	1,5	1,7
EF 2	1,6	0,78	1,3	1,7	2,1	2,5	2,7	3,1
EF 3	2,0	1,7	2,5	3,0	3,7	4,4	4,9	5,8
EF 4	2,4	2,4	3,5	4,3	5,3	6,3	6,9	8,2
EF 5	2,8	3,3	4,9	5,8	7,2	8,4	9,5	11,1
EF 6	3,2	4,3	6,5	7,6	9,5	11,1	12,5	14,6
EF 7	3,6	4,9	7,5	9,1	11,2	13,2	14,9	16,4
EF 8	4,0	6,0	9,2	11,2	13,7	16,2	18,2	20,1
EF 9	4,4	8,1	11,8	14,0	16,8	19,3	21,9	26,7
EF 10	4,8	9,6	13,9	16,5	19,9	22,8	25,9	31,6

Contact our Helpline for any special requirements:
Tel: +44 (0) 151 424 6821
Fax: +44 (0) 151 495 1043
e-mail: sales@delavan.co.uk
Web: www.delavan.co.uk

